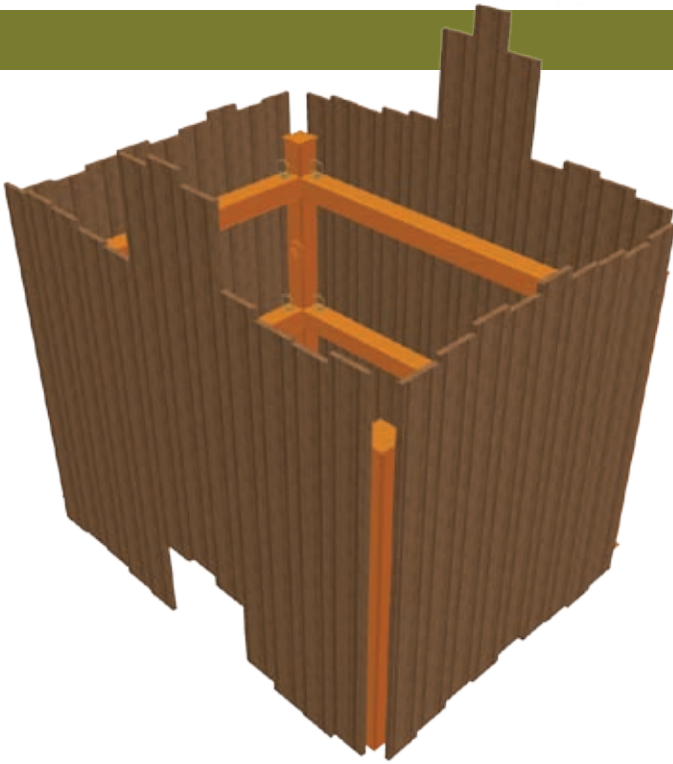


TimberShore System

Modular Water System



Note: This system is assembled with TimberShore Pre-Engineered wooden panel. Also available is TimberShore Pre-Engineered Wood Planks, V-Panels Aluminum Panels, Lite Duty T1 Trench Plate and Finn Form.

Modular Components

- **Waler** a variety of lengths are available
- **End Post** Stackable units available
- **Spreader Beams** variety of lengths are available

Owner's Manual

An Owner's Manual is provided with every system that is sold, supplying you with certified depth data. The manual also includes examples of assembly and usage.

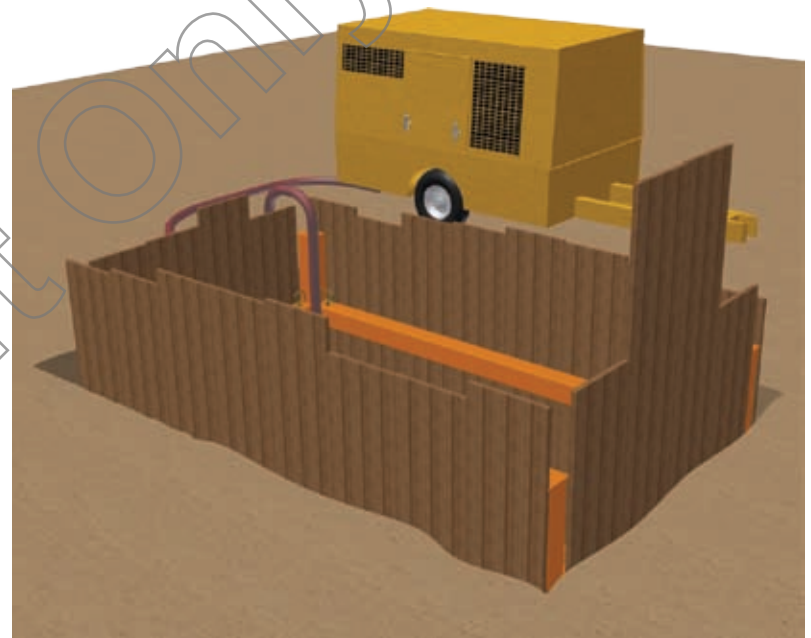
Assembly and Installation

The planks are a Specially Engineered Wood that are made from many layers of thin veneer so there are no concentrated areas of knots or cross grains. This makes them capable of handling every day elements, heavy loads and the wear from repeated usage. Each plank is proof-loaded by the manufactory to make sure it meets the industrial quality and OSHA standards.

Simple Affordable Trench Safety

- Trench lining for laying pipe
- Pit installation for launching trench less pipe mechanisms.
- Pipe repair

TimberShore is an all steel modular component waler system that is assembled by hand. The modular system consists of corner end-post, walers and beam spreaders in a variety of lengths that you pin together creating a strong frame that is easily placed into the trench. With just a handful of components, choose the components you need to match your trench for depth, length, and width, then assemble.



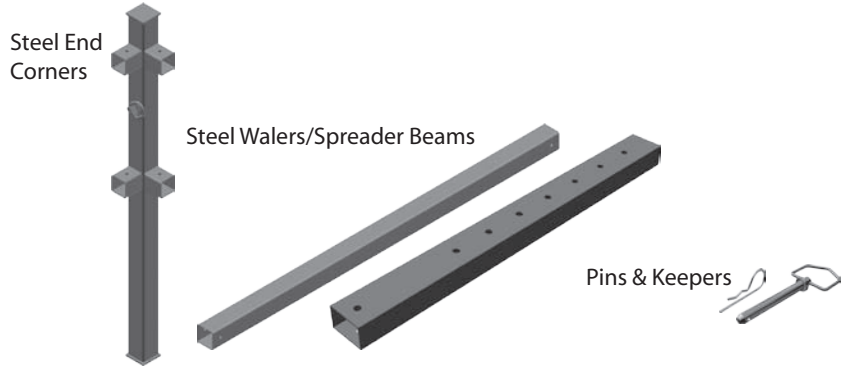
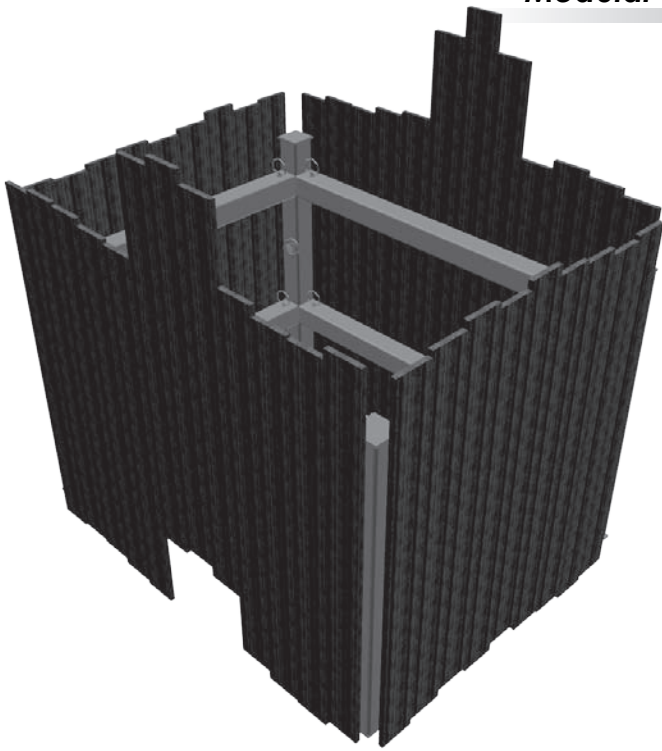
Lining a trench or doing sport repairs are as easy as 1...2...3...

1. Excavate
2. Drop in frame
3. Drop in wood planks

You have a safe trench to work in Just like that.

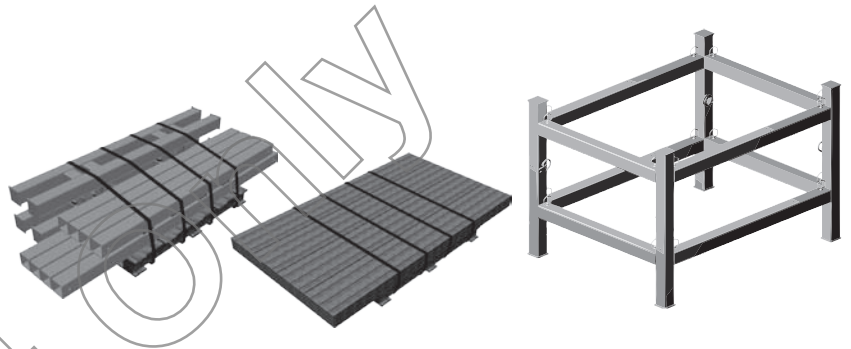
Manufactured by

Kundel



Unassembled components stack and store away in a limited space giving you the opportunity to pick and choose the right stuff to quickly meet the job requirements. Now you can actually change the length of your shoring equipment.

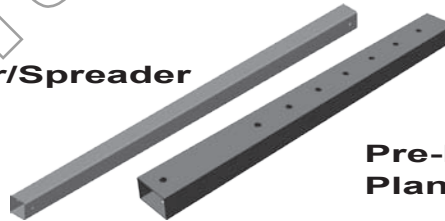
Each frame kit comes with a two side frame consisting of 4 to 6 walers, (depending on the height,) and 4 end-posts. The width is determined by your choice of the spreader beam length. Spreader Beams come in a set of 4 or 6 including pins and keepers. Spreader Beam adjusters and Hydraulic struts are available for varied widths in a jiffy.



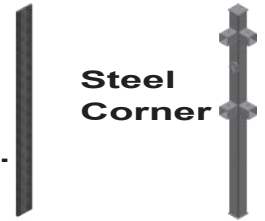
Steel Panel



Steel Waler/Spreader



Pre-Eng. Plank



Steel Corner

System	model	wgt.	"A"	"B"	"C"
4'Tall	4' x 4'	425	28	14	10
	4' x 6'	508	28	14	10
	4' x 8'	548	28	14	10
	4' x 10'	676	28	14	10
6'Tall	6' x 4'	537	28	14	10
	6' x 6'	621	28	14	10
	6' x 8'	660	28	14	10
	6' x 10'	788	28	14	10
8'Tall	8' x 4'	607	28	14	10
	8' x 6'	733	28	14	10
	8' x 8'	792	28	14	10
	8' x 10'	984	28	14	10

System	Size	wgt.
Steel Panels	2'	24
	2.5'	30
	3'	36
	3.5'	42
	4'	48
	4.5'	54
	5'	60
	5.5'	66
	6'	72
	6.5'	78
7'	84	
7.5'	90	
8'	96	

System	model	wgt.
Pre Engineered Planks	4'	20
	6'	30
	8'	40
	10'	5
Steel Corner	4'	58
	6'	86
	8'	103

Call one of Kundel's Trench Tech Specialist today for a configuration plan with instruction that meet your needs.

***ALL INFORMATION SUBJECT TO CHANGE WITHOUT NOTICE.**

April 2007 Kundel Ind., Inc. P.O. Box 4686 Austintown, OH 44515 Ph 330.259.9009 Fax 330.259.9001