

# THE BASIC 3

## ALL STEEL TRENCH BOX

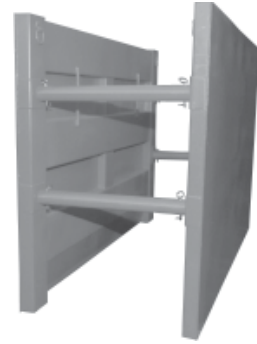
The **Basic 3** model is a series of shields for small excavators as well as rubber tired backhoes. Built with high standards to provide reliability in the field. This box is built tough and priced right. An excellent range of sizes is provided for the B3 model. This is a great model for Municipalities, Plumbers and Industrial maintenance Crews. Great shield for spot repairs, taps, minor mainline work.

### FEATURES

- Tamping Blocks
- Lifting Lugs
- Forged Spreader Pins
- Solid Welded

### ACCESSORIES

- 12" X 12" Cut Out
- Stacking Rings
- Tandem Connectors
- Lite Sling
- Drop Ons



Vertical Clearances				
	Height (ft)	4'	6'	7.5'
	Rear Pipe (in)	27	27	27
	Front Pipe (in)	27	27	27

Horizontal Clearances							
	Length (ft)	4'	5'	6'	7'	8'	10'
	Front to Rear (in)	36"	48"	60"	72"	84"	108"

A Spreaders	
Length	Weight
18 in.	49 lb.
24 in.	64 lb.
30 in.	80 lb.
36 in.	95 lb.
42 in.	110 lb.
48 in.	125 lb.
54 in.	140 lb.
60 in.	155 lb.
66 in.	171 lb.
72 in.	186 lb.
96 in.	246 lb.
ADJ.	92 lb.
3" SPR SET OF 4	

Model	Weights & Price		Spreader Table	Ratings		
	Weight	Price		Depth Ratings		
Model - H x L Style	Weight	Price		A Soil	B Soil	C Soil
<b>B3</b> - # X # - #	<b>POUNDS</b>			<b>FEET</b>		
B3 - 4' X 4' - ST	480		A	58'	32'	24'
B3 - 4' X 5' - ST	565		A	58'	32'	24'
B3 - 4' X 6' - ST	645		A	58'	32'	24'
B3 - 4' X 7' - ST	725		A	52'	30'	23'
B3 - 4' X 8' - ST	824		A	46'	26'	20'
B3 - 4' X 10' - ST	984		A	29'	17'	13'
B3 - 6' X 4' - K	675		A	58'	32'	24'
B3 - 6' X 5' - K	790		A	58'	32'	24'
B3 - 6' X 6' - K	900		A	58'	32'	24'
B3 - 6' X 7' - K	1040		A	53'	30'	23'
B3 - 6' X 8' - K	1155		A	47'	27'	21'
B3 - 6' X 10' - K	1386		A	30'	17'	14'
B3 - 7.5' X 8' - K	1395		A	47'	27'	21'
B3 - 7.5' X 10' - K	1695		A	30'	17'	14'

# THE BASIC 5

## ALL STEEL TRENCH BOX

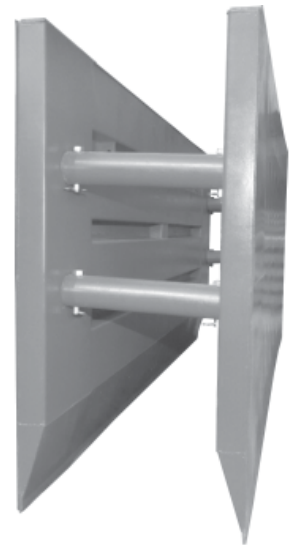
The **Basic 5** model is a series of shields for the small excavators. Built to work well in 12' length sewer line installations. The weight, durability and depth ratings for this model are ideal for any contractor. If you have a machine in the 6 metric ton to 19 metric ton class, this is a great shield for them to consider. This will definitely provide the protection needed while increasing main line sewer production.

### FEATURES

- Tamping Blocks
- Lifting Lugs
- Forged Spreader Pins
- High Taper
- 3/8" x 3" Cutting Bar
- Solid Welded

### ACCESSORIES

- Stacking Lugs & Plates
- Tandem Lugs & Plates
- Chain Slings
- Drop Ons



Vertical Clearances				
			(14')	(16')
	Height (ft)	4'	7.5'	7.5'
	Rear Pipe (in)	32	46	46
	Front Pipe (in)	32	46	32

Horizontal Clearances				
	Length (ft)	12'	14'	16'
	Front to Rear (in)	124"	148"	160"

3/4" Pounding Pads	14"	14"	26"
--------------------	-----	-----	-----

C Spreaders	
Length	Weight
18 in.	210 lb.
24 in.	267 lb.
30 in.	324 lb.
36 in.	381 lb.
42 in.	438 lb.
48 in.	496 lb.
54 in.	553 lb.
60 in.	610 lb.
72 in.	724 lb.
84 in.	838 lb.
96 in.	953 lb.
ADJ.	290 lb.
6" SPR SET OF 4	

Model	Weights & Price		Spreader Table	Standard		
	Weight			Depth Ratings		
Model - H x L Style	Weight			A Soil	B Soil	C Soil
<b>B5</b> - # X # - #	<b>POUNDS</b>			<b>STANDARD</b>		
B3 - 5' X 12' - K	2195		C	38'	22'	17'
B3 - 5' X 14' - K	2472		C	38'	22'	17'
B3 - 5' X 16' - K	2793		C	31'	18'	14'
B3 - 7.5' X 12' - K	3095		C	38'	22'	17'
B3 - 7.5' X 14' - K	3450		C	38'	22'	17'
B3 - 7.5' X 16' - K	4295		C	38'	22'	17'